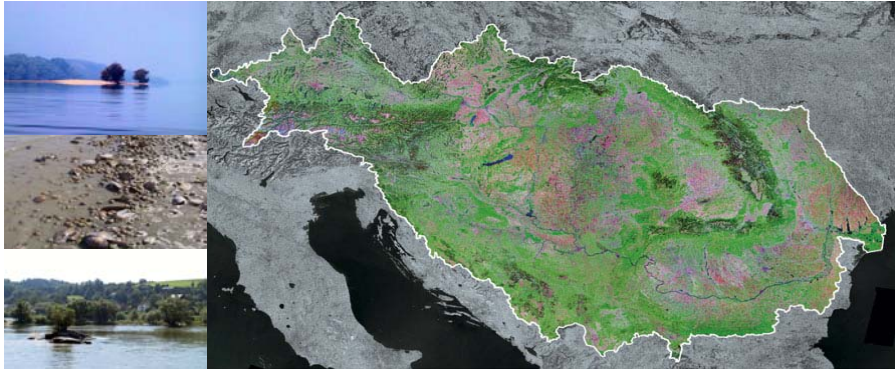


River Basin Management



UNDP/GEF Danube Regional Project
Final Seminar
21 – 22 February 2007, Bucharest (RO)

Birgit Vogel
ICPDR
birgit.vogel@icpdr.org

Content



- ⇒ Tasks and objectives RBM Planning in DRB
- ⇒ Achieved objectives
 - ⇒ brief overview
- ⇒ Summary and Synopsis

ICPDR – River Basin Management



EU Water Framework Directive

- ⇒ implementation = highest priority
- ⇒ all EU MS and EU Accession Countries implement
- ⇒ all other Danube states committed themselves to implement (Sofia, December 2000)



Objectives Danube River Protection Convention

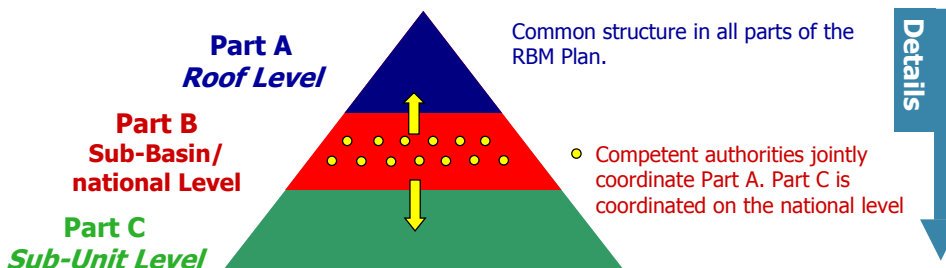
Final Seminar of the UNDP/GEF Danube Regional Project
River Basin Management - Birgit Vogel (ICPDR)

Danube River Basin Management Plan



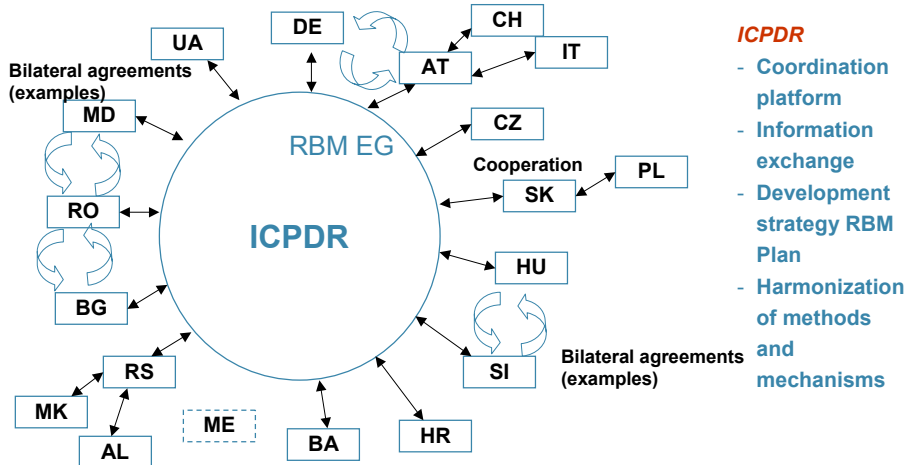
.....has to be compiled by 2009/10

good coordination mechanisms and a clear strategy including timelines are needed



Final Seminar of the UNDP/GEF Danube Regional Project
River Basin Management - Birgit Vogel (ICPDR)

Coordination Mechanisms



Final Seminar of the UNDP/GEF Danube Regional Project
River Basin Management - Birgit Vogel (ICPDR)

RBM Plan – 4 Phases



Danube Basin Analysis

icpdr iksd

International Commission for the Protection of the Danube River
International Commission for the Protection of the Danube River

The Danube River Basin District

icpdr iksd

River basin characteristics, impact of human activities and economic controls required under Article 5, Annex II and Annex III, and inventory of protected areas required under Article 5, Annex IV of the EU Water Framework Directive (2000/60/EC)

Part A – Basin-wide overview

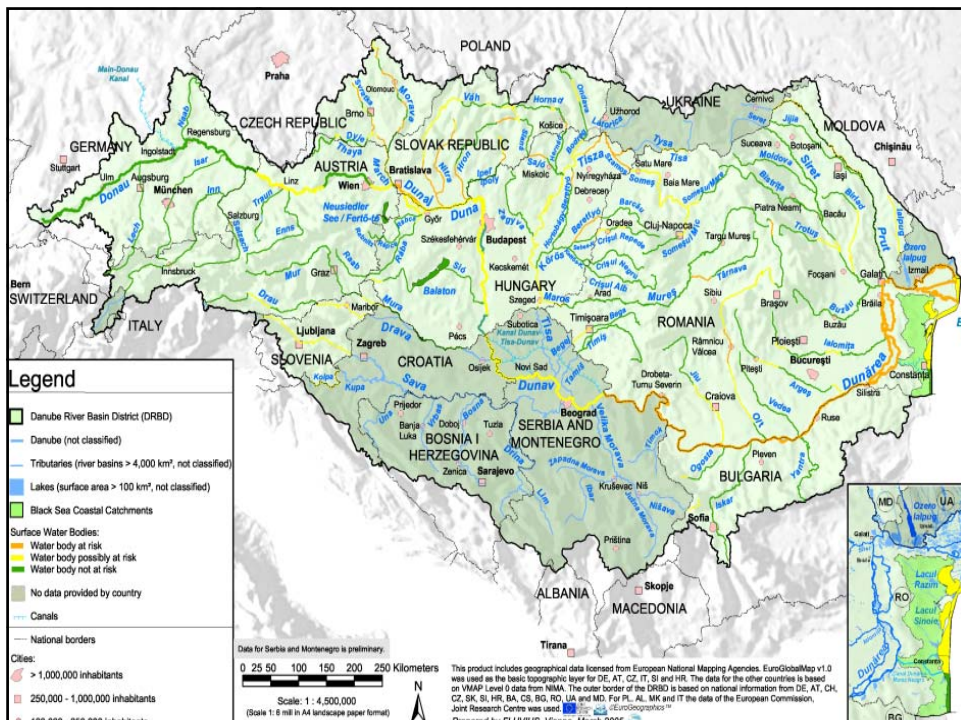
March 2005, "Danube Basin Analysis DRBD Report 2004"



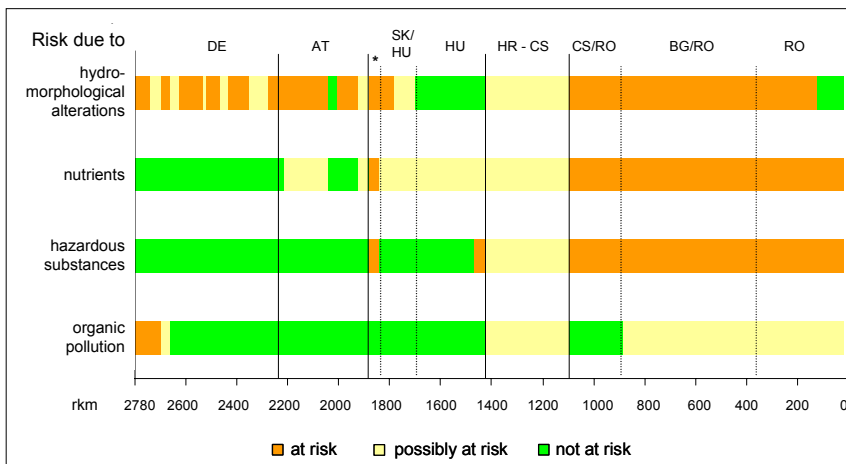
The complete report consists of Part A, Basin-wide overview, and Part B, Detailed analysis of the Danube river basin countries. 18 March 2005, Reporting deadline: 22 March 2005

- ⇒ First comprehensive analysis of the entire Danube River Basin
- ⇒ Cooperation between all DCs
- ⇒ Basis for any future river basin management planning
- ⇒ Identification of significant water management issues

Contribution of UNDP/GEF DRP was crucial - very target oriented support for evaluations/analyses, template evaluations, MONERIS, mapping, etc.

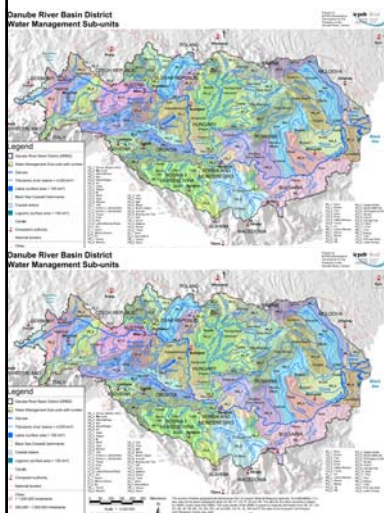


Identification Significant Water Management Issues



Final Seminar of the UNDP/GEF Danube Regional Project River Basin Management - Birgit Vogel (ICPDR)

Sub-Basin Activities



⇒ RBM Plans for sub-basins

- ⇒ Tisza Basin
- ⇒ Sava Basin
- ⇒ Prut Basin
- ⇒ Danube Delta

⇒ More detailed scale than DRBM Plan

UNDP/GEF DRP support towards these RBM plans – focus Basin Analysis (Sava, Tisza)

Trans National Monitoring Network - TNMN

icpdr ikisd

International Commission for the Protection of the Danube River
 Internationale Kommission zum Schutz der Donau

Surface Waterbody Monitoring Stations: Surveillance and Operational monitoring (MAP FORMAT EXAMPLE)



TNMN

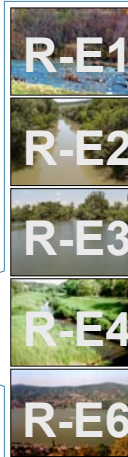
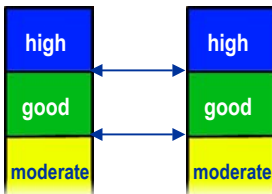
Has been adapted to WFD requirements and will be sent to EC by March 2007

UNDP/GEF DRP support regarding development of WFD compliant surveillance monitoring

Intercalibration Exercise

icpdr ikisd

International Commission for the Protection of the Danube River
 Internationale Kommission zum Schutz der Donau



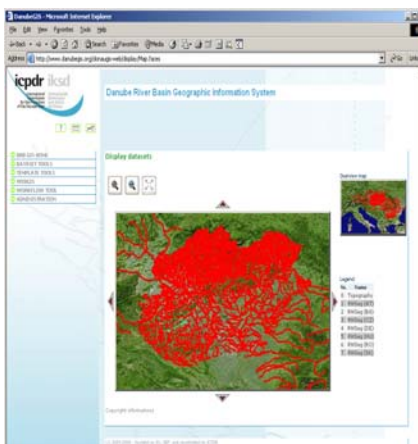
- ⇒ Comparison of national class boundaries among countries according to WFD
 - ⇒ Basis for water status assessment
 - ⇒ Enables comparability of results
 - ⇒ Completed end 2006
- UNDP/GEF DRP support of overall process (analyses, workshop, etc.)

Training Courses – WFD Compliance



Final Seminar of the UNDP/GEF Danube Regional Project
River Basin Management - Birgit Vogel (ICPDR)

Danube Geographic Information System



Serves facilitation of

- ⇒ production of maps
- ⇒ transboundary data management
- ⇒ data harmonisation
- ⇒ creating common tools for RBM planning on all levels/scales

UNDP/GEF DRP support
regarding the development of the
Danube GIS Prototype

Final Seminar of the UNDP/GEF Danube Regional Project
River Basin Management - Birgit Vogel (ICPDR)

Summary & Synopsis



- ⇒ Support was essential
- ⇒ For RBM small & targeted interventions helped to achieve overall objectives

NOW way towards the final Danube RBM Plan

- ⇒ based on previous findings
- ⇒ a lot of operational steps have to be developed and completed within upcoming 3 years

Final Seminar of the UNDP/GEF Danube Regional Project
River Basin Management - Birgit Vogel (ICPDR)

Summary & Synopsis

RBM Issues 2007-2009



- ⇒ Development of **joint** management tasks and environmental objectives for each Significant Water Management Issue
- ⇒ **Joint Programme of Measures**
 - ⇒ translation of national measures to DRB scale
 - ⇒ template development and evaluations
- ⇒ Basin wide **economic considerations** (approach development)
- ⇒ Further development of **GIS** to visualise and analyse collected information
- ⇒ Continuation **Intercalibration Exercise**
- ⇒ **Harmonisation** of assessment methods in the DRB as basis for sound river basin management (further practical training)

THANKS TO UNDP GEF/DRP FOR THE SUPPORT & COOPERATION IN DANUBE RBM PLANNING!

